

OUR HOUSE TO HOME BEAUTIFUL HAMPTONS REVEAL!

AUSTRALIAN

# no one beautiful

EASY-CLEAN BATHROOM ESSENTIALS

PREPARE A  
SPRINGTIME  
FEAST  
FOR FAMILY  
& FRIENDS

*welcome home*

MORNING  
MUST-HAVES  
*buyer's guide  
to breakfast  
bliss*

EVERLASTING STYLE

THE KITCHEN TRENDS YOU'LL LOVE FOREVER

## OUTDOOR SPECIAL

EXPERT TIPS, BEST BUYS AND THE SECRETS TO GARDEN SUCCESS

50  
AMAZING  
OUTDOOR  
IDEAS



### Simple elegance

Contemporary, natural and calm: this is what Janine wanted her home to be, and after engaging Penny del Castillo of In Design International to work on her new home's interior, she achieved just that. The entryway features timber stairs with a slimline brass handrail plus drop pendants by Christopher Boots to set a chic, refined mood.



## AT HOME WITH: JANINE ALLIS

THE FOUNDER OF BOOST JUICE AND DEKTON BY COSENTINO AMBASSADOR INVITES US INTO HER FAMILY HOME IN THE EASTERN SUBURBS OF MELBOURNE

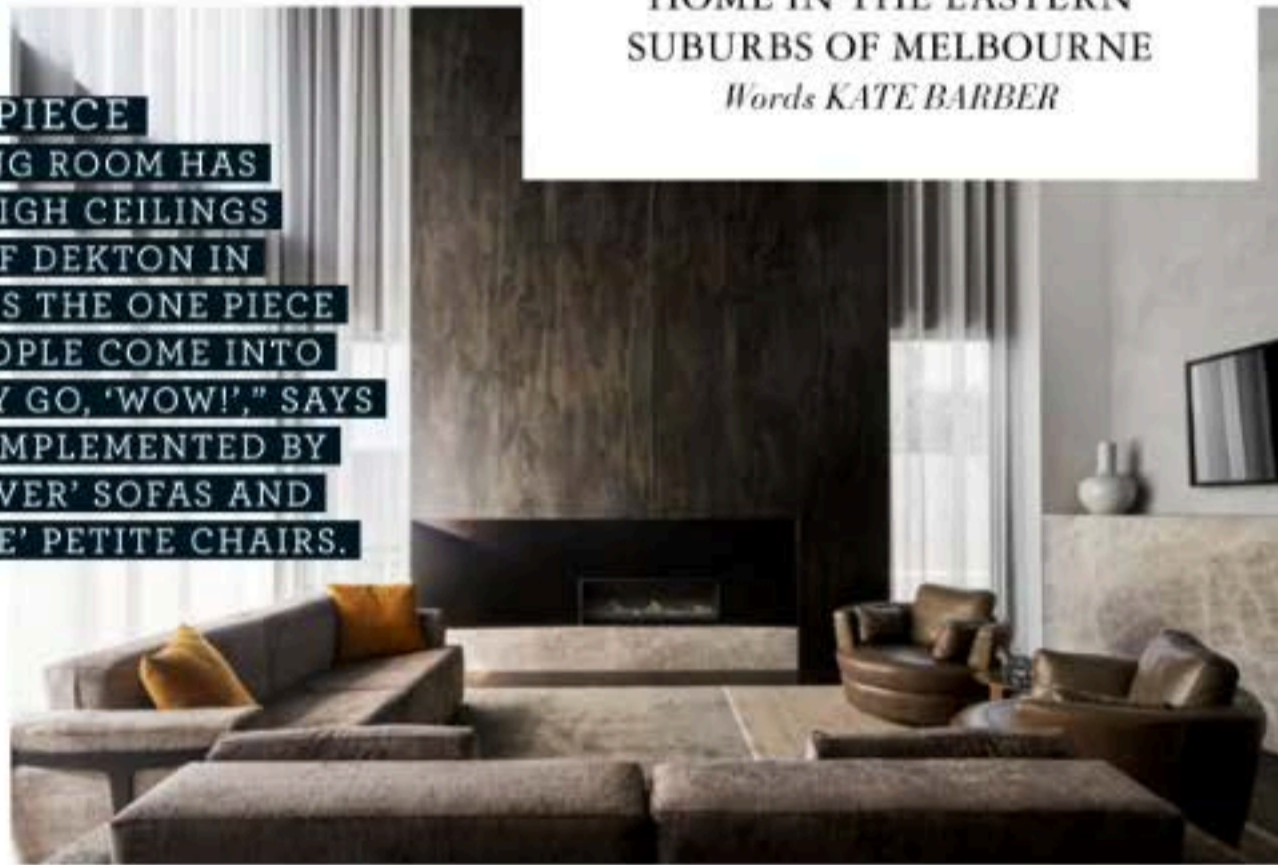
Words KATE BARBER

### A PLACE OF CALM

Janine's favourite space is her yoga room-slash-office. "The feeling I was going for was serenity, so the colours are quite light," she says. Behind her Globe West desk and Vivora sitting ball, pale-hued Dekton in Nilium sits atop bespoke timber veneer cupboards. The painting of Janine, a gift from husband Jeff, is of a photo taken at the end of a yoga retreat and reminds her to return to the mat. "It's sort of my north star," she explains.

### STATEMENT PIECE

THE MAIN LIVING ROOM HAS EIGHT-METRE-HIGH CEILINGS WITH A WALL OF DEKTON IN RADIUM. "THAT'S THE ONE PIECE THAT WHEN PEOPLE COME INTO THE ROOM THEY GO, 'WOW!'," SAYS JANINE. IT'S COMPLEMENTED BY BOYD BLUE 'OLIVER' SOFAS AND PLUSH 'SNUGGLE' PETITE CHAIRS.



### ISLAND DREAMING

A kitchen island combines pearlescent Sensa in Taj Mahal with a dark Dekton in Sirius benchtop. "I liked the fact it looked like it was floating," says Janine. "It's also indestructible."



### THE 'GOOD' ROOM

THIS SPACE IS FOR WORK MEETINGS AND RELAXING. "IT'S WHERE YOU HAVE A GLASS OF RED AND SOLVE ALL THE PROBLEMS OF THE WORLD," SAYS JANINE. A 'KOOH-I-NOOR' MIRROR PRESIDES OVER A 'GENTRY' SOFA BY PATRICIA URQUIOLA AND A MARK TUCKEY 'OXO' COFFEE TABLE.



**CRYSTAL CONNECTION**  
LIGHTING BY CHRISTOPHER BOOTS  
IS A FEATURE THROUGHOUT. IN  
THE DINING SPACE, 'ORACLE' TWIN  
PENDANTS HANG DRAMATICALLY  
ABOVE A CROWD-PLEASING  
FRANCOCREA CUSTOM TABLE  
AND 'MILA' CHAIRS. "I LIKE THE  
FACT THAT EACH ROOM CAN BE  
CONNECTED WITH EACH OTHER  
BUT STILL HAVE ITS OWN  
PERSONALITY," SAYS JANINE. >



STYLING: IVY HUDA FAUZANI PHOTOGRAPHY: DAMIEN KOOK

## GRAND ENTRANCE

The three-metre-high front door is a slab of Dekton in Radium, which is also used in the living room (below) and main ensuite bathroom (bottom left & bottom right). "It's a nice piece in the house and for the hallway in particular," says Janine. The hallway, with dark timber underfoot and simple downlights, leads to the living room with a view of the garden through net curtains.



## LIGHT AND BRIGHT

This bathroom belongs to Janine's 12-year-old daughter Tahlia and has been created with her in mind. "I tried to go for light timbers and materials, which suited her personality," explains Janine. "The other bathrooms are probably a little bit darker because they're skewed toward young men." (Janine and Jeff also live with two of their sons named Oliver and Riley.)

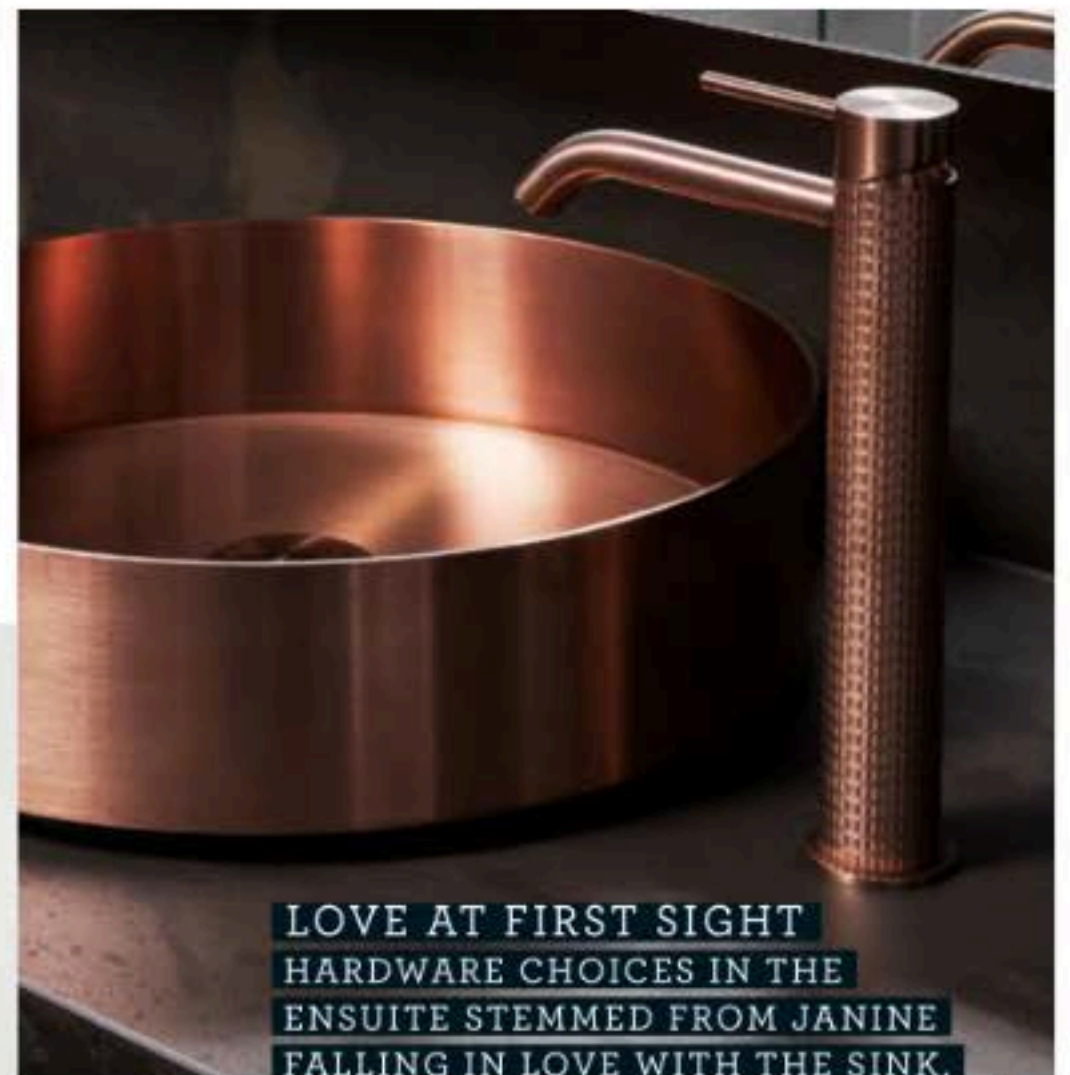
## NEUTRAL PALETTE

WHEN JANINE SELECTED MATERIALS FOR HER HOME, SHE FAVOURED CLASSIC ITEMS. "WALLS OR STONE NEED TO BE PART OF THE BACKGROUND," SHE SAYS. A REAL FLAME FIREPLACE FORMS THE GATHERING POINT FOR THE FAMILY IN THE MAIN LIVING AREA.




## BATHING BEAUTY

Having a beautiful bath in the main ensuite was imperative. "One of my favourite things to do is sit in the bath and just soak," says Janine. "I might read a book or put a Netflix show on, or just put candles and music on." An oval Apaiser 'Zen' bath looks stunning against the Dekton in Radium wall.



LOVE AT FIRST SIGHT  
HARDWARE CHOICES IN THE  
ENSUITE STEMMED FROM JANINE  
FALLING IN LOVE WITH THE SINK.  
"AS SOON AS I SAW THE SINK, THAT  
WON ME OVER - AND THEN I LOOKED  
AT THE WHOLE RANGE AND IT ALL  
FITTED WITH THE STYLE I WANTED,"  
SHE SAYS OF THE GESSI '316  
MECCANICA' SINK AND TAPWARE  
FROM ABEY (ABOVE & OPPOSITE).



"IT WAS ALL ABOUT  
HOW A ROOM FEELS  
AS MUCH AS WHAT IT  
LOOKED LIKE" - JANINE ALLIS

#### HIS, HERS AND OURS

The ensuite is designed to minimise conflict between Janine and Jeff. "He's got a side, I've got a side, but we share the shower, the bath and the toilet," says Janine. "I went back to the things that annoyed me, like leaving the toothpaste out. It's no big deal - but if it's on his side he can do what he likes." There is also a dedicated spot for Janine to do her hair and make-up. 🍷